

DARGANFOD ABERDAUGLEDDAU TRWY GYFRES O  
DISCOVER MILFORD HAVEN IN A SERIES OF

# LWYBRAU CERDDED TREFTADAETH HERITAGE WALKING TRAILS

HAFAN HANESYDDOL  
HISTORIC HAVEN

DYFRFFYRDD  
WATER WAYS

TEYRNAS YNNI  
ENERGY KINGDOM



CRËWYD GAN BOBL IFANC ABERDAUGLEDDAU  
CREATED BY THE YOUNG PEOPLE OF MILFORD HAVEN



Dewch i ddarganfod Aberdaugleddau trwy gyfres o dri llwybr treftadaeth newydd, yn ardal y glannau Aberdaugleddau, a grëwyd gan bobl ifanc yr ardal.

Crëwyd tri llwybr cerdded treftadaeth sy'n dathlu naws am le ein tref, gan ddisgyblion Ysgol Aberdaugleddau fel rhan o brosiect wedi'i ariannu gan Gronfa Dreftadaeth y Loteri, dan arweiniad Milford Youth Matters. Cafodd y straeon hyn a'r gwaith celf cysylltiedig am 'Ein Hafan Hanesyddol', 'Y Deyrnas Ynni' a 'Dilyn y Dyfrffyrdd' eu hysgrifennu a'u cynllunio gan bobl ifanc Aberdaugleddau i'w mwynhau yn ystod eich ymweliad â Glannau Aberdaugleddau.

Discover Milford Haven in a series of three new heritage trails, at Milford Waterfront, created by the young people of Milford Haven.

Three heritage walking trails celebrating our town's sense of place have been created by pupils from Milford Haven School as part of a Heritage Lottery funded project, lead by Milford Youth Matters. These stories and accompanying artwork about our 'Historic Haven', 'Energy Kingdom' and 'Water Ways' were written and designed by the young people of Milford Haven to be enjoyed during your visit to Milford Waterfront.

## HAFAN HANESYDDOL HISTORIC HAVEN

Mae Aberdaugleddau yn gyforiog o hanes. O'r Llychlynwyr i helwyr morfilod, o fôr-ladron i'r Tuduriaid. Mae llwybr 'Hafan Hanesyddol' yn cynnwys 4 arhosfan rhwng Phoenix Bowl a safle newydd Tŷ Hotel, lle gallwch stopio a sganio'r cod QR i ddarllen y straeon llawn a ysgrifennwyd gan ddisgyblion dawnus Ysgol Aberdaugleddau fel rhan o brosiect Milford Youth Matters a ariannwyd gan Gronfa Dreftadaeth y Loteri. Cadwch lygad am y baneri coch ar y polion lamp, sy'n cynnwys cod QR a manylion am sut i ddarllen y straeon llawn ar yr arwyddion isod.

The history of Milford Haven is rich. From Vikings to Whalers, Pirates and Tudors. Our Historic Haven Walking Trail has 4 stops between Phoenix Bowl and the site of the new Tŷ Hotel, where you can stop and scan the QR code to read the full stories written by the talented pupils from Milford Haven School as part of a project lead by Milford Youth Matters and funded by the Heritage Lottery Fund. Look out for the red banners on the lampposts, and you'll find a QR code and details of how to read the full stories on the signs below.

### 1. Hanes Aberdaugleddau

Mae Aberdaugleddau wedi gweld Llychlynwyr, brenhinoedd Tuduraidd, goresgynwyr a llyngesyddion ar hyd y canrifoedd. Dilynwch llwybr hanesyddol yr ardal o 1793 hyd heddiw. Dysgwch am y dyfrffyrdd mawr eu bri drwy'r oesau a sut y cafodd ein tref ei henwi.

#### A Blessed Haven of History

Milford Haven has seen Vikings, Tudor Kings, invaders and Admirals. Follow the path of history from 1793 to modern day. Learn about the admiration of the waterway throughout the ages and how our town came to be called Milford Haven.

### 2. Crynwyr a physgotwyr morfilod

Mae gan bob stryd enw a hanes unigryw! Dysgwch am deuluoedd y Crynwyr o Nantucket a Martha's Vineyard, am y fasnach hela morfilod ac am eu heffaith ar Aberdaugleddau hyd heddiw!

#### The Quaker Whaler Families

Each street has a name and a history! Learn about the Quaker families from Nantucket and Martha's Vineyard, explore the whaling trade and how their impact remains in Milford Haven today!

### 3. Dechreuad diddorol Aberdaugleddau

Dysgwch am sylfaenwyr diddorol Aberdaugleddau a sut y cafodd ein strydoedd hoff eu henwi. Hefyd, beth sy'n gyffredin rhwng Charles Greville, William Hamilton a'r Arglwydd Horatio Nelson.

#### Fascinating Founders of Milford

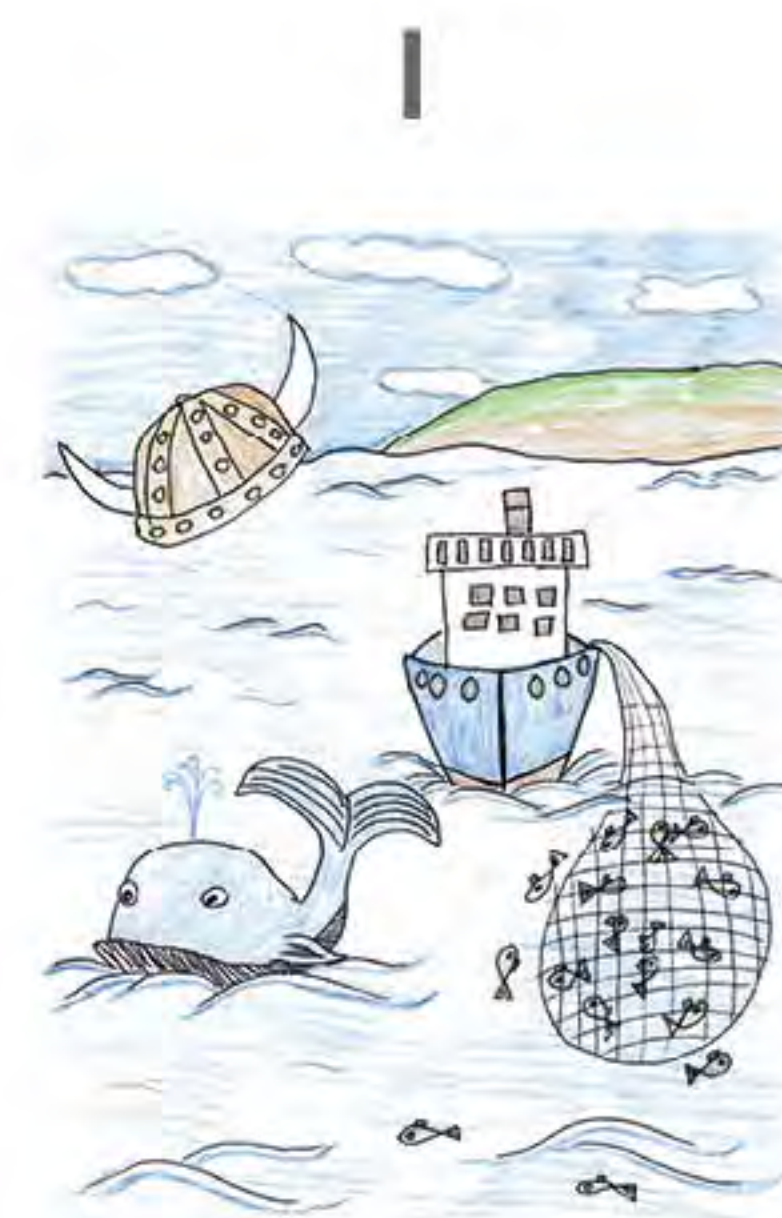
Learn about the fascinating founders of Milford Haven, find out how the street names we've come to know and love came to be. Plus, how Charles Greville, William Hamilton and Lord Horatio Nelson all had something in common.

### 4. Aberdaugleddau hanesyddol

Saif y dref hon, sy'n gyforiog o hanes, ar aber dwy afon - Cleddau Ddu a Chleddau Wen. Yn nrama William Shakespeare, Cymbeline, mae Imogen yn dweud: "Tell me how Wales was made so happy as to inherit such a haven?" Wel, dyma sut...

#### Historic Milford Haven

This historically rich town sits at the "mouth of the two Rivers Cleddau" – from the Welsh word Aberdaugleddau. In William Shakespeare's play Cymbeline, Imogen reads: "Tell me how Wales was made so happy as to inherit such a haven?" Well, this is how...



2



3



4





# DYFRFFYRDD WATER WAYS

Bydd llwybr Dyfrffyrdd Aberdaugleddau yn mynd â chi ar hyd Cei Nelson, gan gychwyn tu fas i Scott's Sweet Shop a gorffen ger Talouies. Cadwch lygad am y baneri glas golau ar y polion lamp, a'r arwyddion oddi tano lle gallwch stopio a sganio'r cod QR i ddarllen y straeon llawn a ysgrifennwyd gan bobl ifanc ein tref.

## 1. Hanes capten llong o Aberdaugleddau

Awn â chi'n ôl i 1898 a stori'r capten lleol, Ralph Light, a'i deulu. Dilynwch ei daith drwy'r Rhyfel Byd Cyntaf ac ar y treill-longau wrth iddo hwylio'r moroedd cyn dychwelyd adre'n ddi-ffael i Aberdaugleddau.

### History of a Milford Skipper

We take you back to 1898 and the story of a local Skipper, Ralph Light, and his family. Follow his journey through World War One and onto the trawlers as he sailed the sea always returning to his home in Milford Haven.

## 2. Môr-leidr go iawn

Dysgwch am Howell Davies, y môr-leidr hoffus, a fu'n morio ar long y Cadogan o Aberdaugleddau. Yn brentis i'r enwog Barti Ddu, fe groesodd y moroedd mawr o amgylch y Bahamas, Cape Verde ac Affrica. Dewch i ddarganfod hanes Aberdaugleddau fel magwrfa môr-leidr o'r iawn ryw!

### A Real Life Pirate

Find out about the charming pirate Howell Davies, who set sail from Milford Haven on The Cadogan. An apprentice of the infamous Barti Du, he sailed the seas around the Bahamas, Cape Verde and Africa. Discover how Milford Haven was the hometown of a real pirate!

The Water Ways trail will take you along Nelson Quay, starting outside Scott's Sweet Shop and ending outside Talouies. Look out for the light blue banners on the lampposts, and the signs underneath where you can stop and scan the QR code to read the full stories written by the young people of our town.



2



## 3. Aberdaugleddau Shakespeare

O ddociau ffyniannus i atyniad bywiog i dwristiaid, gallwch fwynhau'r cyfan yma yn Aberdaugleddau. Yng ngeiriau William Shakespeare *'...how far it is to this same blessed Milford: and by the way tell me how Wales was made so happy as to inherit such a haven...'*

### Shakespeare's Haven

From a thriving dockland to a vibrant tourist attraction, you can enjoy it all in Milford Haven. In the words of William Shakespeare *'...how far it is to this same blessed Milford: and by the way tell me how Wales was made so happy as to inherit such a haven...'*

## 4. Prydferthwch heb ei ail

Mae gan Aberdaugleddau un o aberoedd dyfnaf y byd, ac mae ei harfordir trawiadol o glogwyni garw ac ynsoedd tawel yn hafan i weithgareddau hamdden. Darllenwch ragor a gadewch i ardal Aberdaugleddau, gyda'i chaerau hanesyddol, traethau bach diarffordd, pentrefi tlws a bywyd gwyllt eich swyno.

### A Beauty Like No Other

Milford Haven has one of the world's deepest estuaries, its stunning picturesque coastline of rugged cliffs and tranquil islands are a haven for leisure activities. Read more about why Milford Haven, with its historical forts, secluded tiny beaches, quaint villages and wildlife, will open your eyes to a beauty never seen before.

3



4





# TEYRNAS YNNI ENERGY KINGDOM

Aberdaugleddau yw porthladd ynni mwyaf y DU. Mae'r ardal wedi gweld newidiadau mawr ers 1960 – dilynwch lwybr Teyrnas Ynni i ddysgu mwy. Sylwch ar faneri melyn ar y polion lamp sy'n croesi Mackerel Quay. Mae arwyddion bach ar yr un lampau yn cynnwys codau QR, a fydd yn eich tywys i'r straeon llawn a grëwyd gan bobl ifanc ein tref.

## 1. Mae Popeth Yma!

Ewch ar daith o'r gorffennol i'r presennol a gweld beth sydd gan y dyfodol i'w gynnig yn Aberdaugleddau! Dysgwch am y diwydiant ynni ar garreg ein drws a sut y bydd yn newid y byd er gwell!

### We have it all!

Go on a journey from past, to present and see what the future holds in Milford Haven! Learn about the energy industry we have right on our doorstep and how it will be changing the world for better!

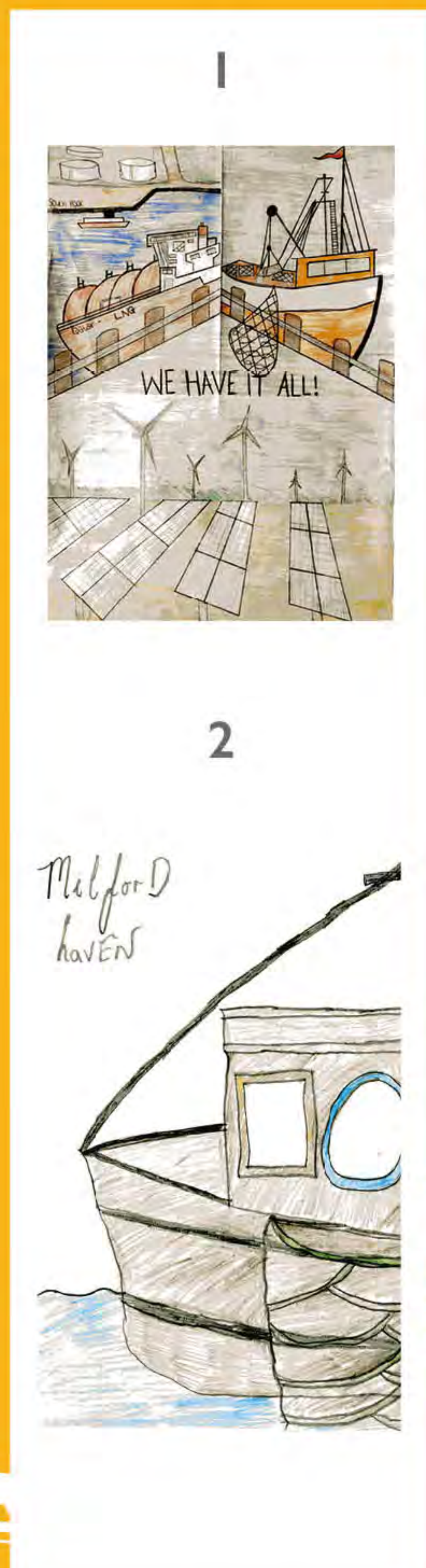
## 2. Dyfrffyrdd gwyllt a gwych

Mae'r cwch pysgota yn arwydd o orffennol Aberdaugleddau, ac fel un o borthladdoedd pysgota mwyaf y DU mae'n parhau i fod yn rhan enfawr o'i phresennol, ac mae'r dref yn edrych ymlaen at ddyfodol adnewyddadwy ac at fod yn gyrchfan wych i ymwelwyr o bell ac agos. Dysgwch ragor am yr holl elfennau hyn a mwy.

### Wild and Wonderful Waterway

The Fishing boat represents Milford Haven's past, and as one of the UK's largest fishing Ports it remains a huge part of its present, looking ahead to a future of renewable plus a wonderful tourist destination. Learn more about all these elements and more.

Milford Haven is the UK's largest energy Port. Starting in 1960 the area has seen many changes, follow the Energy Kingdom trail to find out more. Keep an eye out for the yellow lamppost banners which go across Mackerel Quay. There are small signs on the same lampposts with QR codes, which will take you to the full stories created by the young people of our town.



## 3. Yr oes olew gyntaf

Edrychwch yn ôl ar esblygiad y diwydiant olew ac ynni yn nyfrffordd Aberdaugleddau. O olew morfilod i LNG, mae ein sir fach ni yn ganolbwynt i gyfoeth o adnoddau!

### The First Oil Age

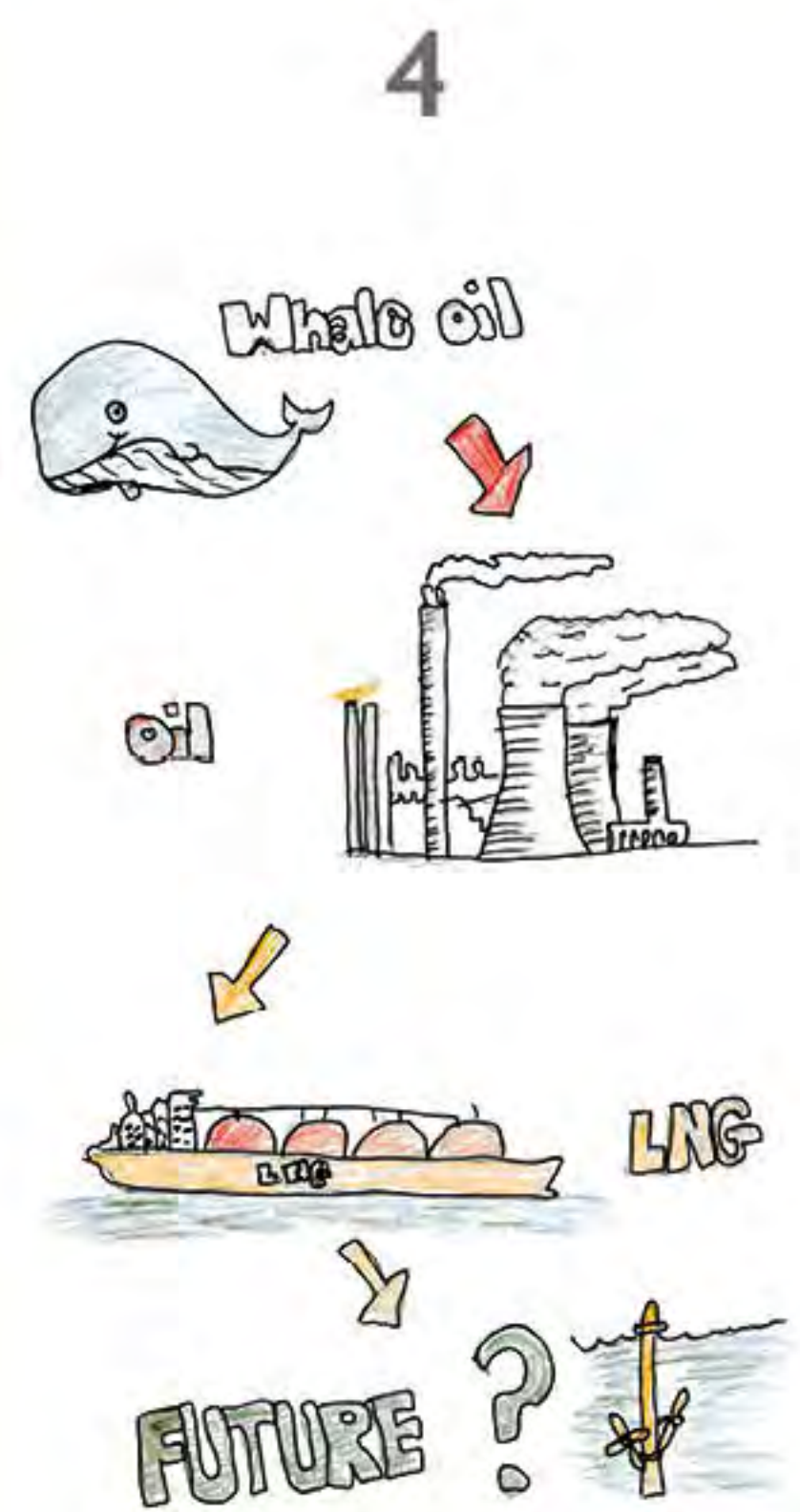
Take a look back at the evolution of the Oil and Energy industry in the Milford Haven Waterway. From Whale Oil to LNG, our small county is the hub to a world of resource!

## 4. Siwrne'r ddyfrffordd

Wedi'i sefydlu yn 1792, mae'r Ddyfrffordd wedi addasu i anghenion y byd erioed - cymerwch gip yn ôl ar lanw a thrai'r Ddyfrffordd, a pham mae'r dyfodol yn edrych yn ddisglair.

### The Journey of the Waterway

Founded in 1792, the Waterway had always adapted to the need of the world, take a lookback at the ups and down of the Waterway and how its future is deemed for great things.



Mae'r straeon hyn wedi cael eu hymchwilio a'u hysgrifennu gan ddisgyblion Ysgol Aberdaugleddau, sydd wedi defnyddio eu creadigrwydd i adrodd hanes eu cynefin yn eu geiriau eu hunain.

These stories have been researched and written by the pupils of Milford Haven School, who have used their creativity to tell the stories of Milford Haven's history in their own words.





LWYBRAU CERDDED TREFTADAETH  
HERITAGE WALKING TRAILS

# MAP

## HAFAN HANESYDDOL / HISTORIC HAVEN

- 1 Hanes Aberdaugleddau  
A Blessed Haven of History
- 2 Crynwyr a physgotwyr morfilod  
The Quaker Whaler Families
- 3 Dechreuad diddorol Aberdaugleddau  
Fascinating Founders of Milford
- 4 Aberdaugleddau hanesyddol  
Historic Milford Haven

## DYFRFFYRDD / WATER WAYS

- 1 Hanes capten llong o  
Aberdaugleddau  
History of a Milford Skipper
- 2 Môr-leidr go iawn  
A Real Life Pirate
- 3 Aberdaugleddau Shakespeare  
Shakespeare's Haven
- 4 Prydferthwch heb ei ail  
A Beauty Like No Other

## TEYRNAS YNNI / ENERGY KINGDOM

- 1 Mae Popeth Yma!  
We have it all!
- 2 Dyfrffyrdd gwyllt a gwyh  
Wild and Wonderful Waterway
- 3 Yr oes olew gyntaf  
The First Oil Age
- 4 Siwrne'r ddyfrffordd  
The Journey of the Waterway



[www.milfordwaterfront.co.uk/heritagetrails](http://www.milfordwaterfront.co.uk/heritagetrails)

